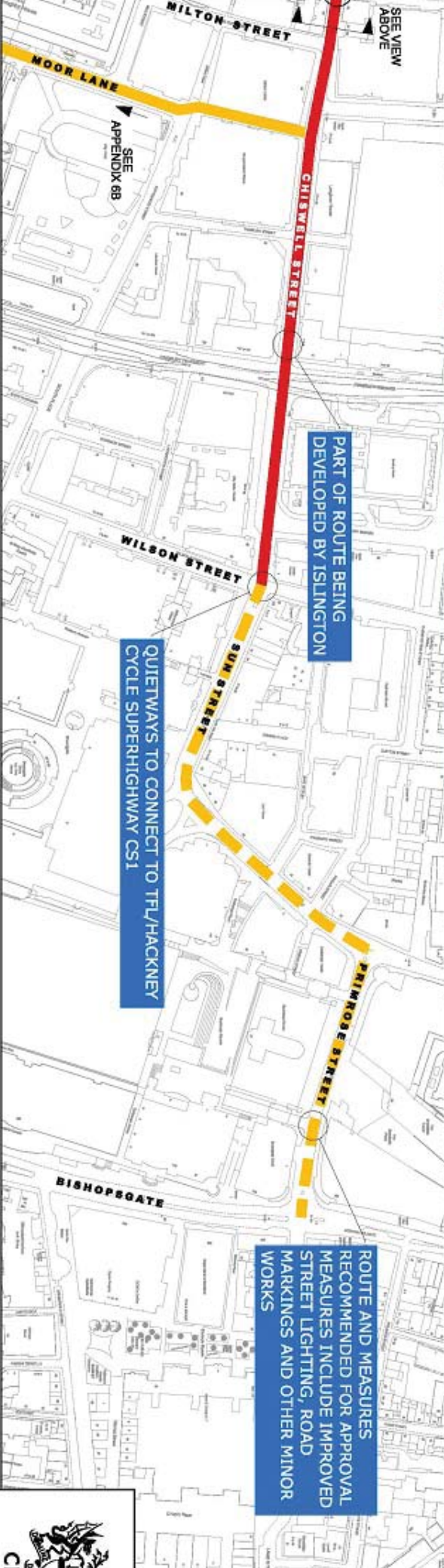


# APPENDIX 2A - PROPOSALS BETWEEN FARRINGDON STREET AND BISHOPSGATE



DEPARTMENT OF THE BUILT ENVIRONMENT, City of London Corporation, PO Box 270, Guildhall, London EC2P 2EJ, 020 7332 1710

This map is reproduced from Ordnance Survey material with the permission of Ordnance Survey on behalf of the Controller of Her Majesty's Stationery Office © Crown copyright 2006. All rights reserved. Unauthorised reproduction prohibited. Ordnance Survey copyright and map data is reproduced or derived from Ordnance Survey of London 1:500000 2006.

